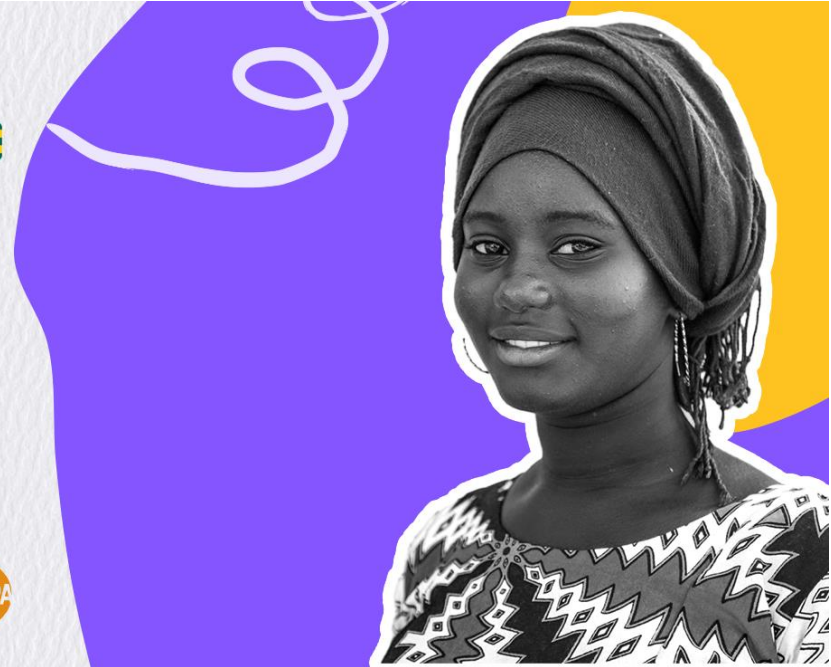


REGIONAL WORKSHOP ON STRENGTHENING PROGRAMS FOR TRANSFORMING HARMFUL GENDERED SOCIAL NORMS AND ENDING GENDER BASED VIOLENCE AND HARMFUL PRACTICES

September 9th to 13th

Saly - Sénégal



PROVISIONAL AGENDA

Time	Agenda item	Facilitator
Day 1: Setting the stage: megatrends, data, evidence, theory of change and frameworks to address social norms		
8:30-9:00	Security briefing	UNDSS
9:00 - 9:30	Opening remarks	World Bank UNFPA
9:30 - 10:00	Introductions <ul style="list-style-type: none"> • Get To Know Each Other • Workshop objectives, methodology and expectations 	RTS/UNFPA
10:00 - 11:00	State of the Art knowledge WCA situation on unequal Social Norms and GBV - Megatrends affecting GBV and women's empowerment. - Definitions/concepts & frameworks, SWEDD ToC/4Es -Rationale for addressing social norms to achieve the Demographic Dividend	UNFPA GHRB NY UNFPA Gender & HR WCA World Bank

Day 2: From Theory to Practice on addressing gendered Social Norms that sustain GBV		
8:45-9:00	Day 1 recap	
9:00-11:00	<p>Programming approaches and tools:</p> <p>1. Different programming approaches to transforming gendered social norms at community level:</p> <ul style="list-style-type: none"> - Module 7 and Module 8 - Videos: (link) <p>- Case studies group exercise: With this exercise, participants will gain a practical understanding of different approaches to transforming gendered social norms and will work on specific case studies reflecting the SWEDD goals. They will be better equipped to apply these strategies in their own community interventions. Note: Case studies will be developed from the survey monkey sent to Cos prior to the workshop</p>	<p>UNFPA GHR Unit WCA & GHRB NY</p> <p>World Bank (what works, what does not work) ODI Examples from "what works" project</p>
11:00-11-15	Coffee/tea break	
	<p>2. Different programming approaches to transforming gendered social norms at institutional and policies level:</p> <ul style="list-style-type: none"> - Module 7 and Module 10 <p>- Case studies group exercise: With this exercise, participants will gain a practical understanding that social norms influence policy and institutions. While policy may be slow to change, institutions like education and SRH services need to be targeted to have friendlier gendered social norms settings and regulations</p>	<p>ODI (direct and indirect approach) -</p> <p>UNFPA GHR Unit WCA</p>
13:00-14:00	Lunch	
14:00-15:00	<p>Evaluating and enhancing visual messaging</p> <ul style="list-style-type: none"> - Psychological Reactance Theory and examples, Group Analysis - Redesign Exercise - Discussion and Best Practices 	TOSTAN

15:00-16:30	3. Organized diffusion, critical mass and reaching a tipping point - Module 9 - Case studies group exercise: With this exercise, participants will gain a practical understanding of designing an organized diffusion and amplification of different approaches to transforming gendered social norms and will be better equipped to apply these strategies in their own women's empowerment and anti-GBV programs.	RTS/UNFPA TOSTAN
16:30-17:00	Plenary and discussion	Moderator
17:00-17:15	Evaluation of the day Social Norms and GBVs Workshop Day 2 Evaluation.docx	RTS/UNFPA
Day 3: Strengthening Interventions: Evidenced-based programmes to transform social norms		
8:45-9:00	Day 2 recap	
9:00-10:30	Interactive screening of videos and reflections from participants - What Works: Video - Sasa!: Raising voices - Tostan videos - Staying Alive, South Africa - Others short videos showcasing a model of intervention evaluated - Presentation and discussion: This session will cover evidence-based approaches for shifting harmful gendered social norms. What works Program (UK funded) Evidence Based Approaches and Practices.pptx	RTS/UNFPA ODI (recap session)
10:30 - 10:45	Coffee/tea break	
10:45:11:45	Continue Evidence Based Approaches and Practices.pptx (End)	UNFPA GHRB NY ODI UNFPA GHR Unit WCA
11:45:13:00	Module 9 SWEDD countries case studies presentation: Organized diffusion, critical mass and reaching a tipping point. (Groupe exercise 5)	UNFPA GHR Unit WCA
13:00-14:00	Lunch	
14:00-18:00	Field visit in 2 villages: Community Empowerment Programme by TOSTAN	

	<ul style="list-style-type: none"> - Village Committees, Adolescents girls, Women, Men, - Refreshment in Tostan Training Center and meeting Djibouti trainees 	
Day 4: Strengthening Response Interventions to tackle GBV		
8:00-9:00	Day 3 recap & Key takeaways from Field visit	RTS/UNFPA
9:00-10:00	GBV concept; Survivor-centered approach	UNFPA GHR Unit WCA
10:00-11:00	Introduction to the Essential Service Package guide <ul style="list-style-type: none"> ● Introduction to Essential Services Package ● Common Principles, Characteristics, and Foundational Elements ● How to Use This Tool 	UNFPA GHR Unit WCA
11:00-11:15	Coffee/tea break	
11:15-12:00	Essential SRH-GBV Services <ul style="list-style-type: none"> ● Introduction to Essential Health Services ● Framework for Essential Services Package ● Guidelines for Essential Health Services (Exercise/case study)	UNFPA GHR Unit WCA
12:00-13:00	Plenary and discussion	Moderator
13:00-14:00	Lunch	
14:00-15:30	<ul style="list-style-type: none"> ● Referral system for GBV cases (Module 6 ESP) ● Case Study exercise 	UNFPA GHR Unit WCA
15:30-16:30	<ul style="list-style-type: none"> ● Strengthening the Coordination ● Panel of best practices, plenary and discussion 	UNFPA GHR Unit WCA
16:30-16:45	kahoot/Icebreaker	RTS UNFPA
16:45-17:00	Evaluation of the day Social Norms and GBVs Workshop Day 4 Evaluation.docx	RTS UNFPA

Day 5: Strengthening monitoring, evaluation and measurement		
8:45-9:00	Day 4 recap	
9:00-11:00	- ACT Framework - SASA! Measurement Indicators....	UNFPA GHRB NY ODI
	- What Works on GBV programming measurement Presentation, adaptation to country case studies	
11:00 -11:15	Coffee/tea break	
11:15-13:00	Plenary discussion	Moderator
13:00-14:00	Lunch	
14:00-15:30	Countries working on their own action plan including TA needs	All facilitators
15:30-16:30	Plenary discussion	Moderator
16:30-17:00	Evaluation NY of the day and evaluation of the Workshop Social Norms and GBV Workshop Day 5 Evaluation.docx	RTS/UNFPA
17:00-17:15	Wrap up and closing of the workshop	World Bank UNFPA